



# GMT MONTHLY MEMBERSHIP PROGRESS REPORT

Results as of: 4/30/2019

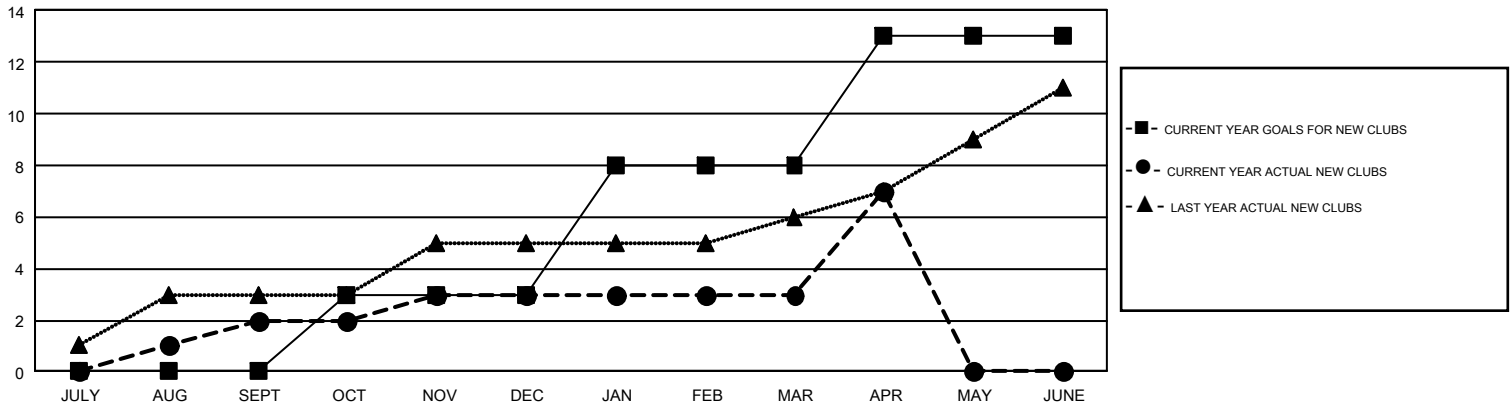
## GMT Constitutional Area 4, Group C

GMT: MIKLOS HORVATH

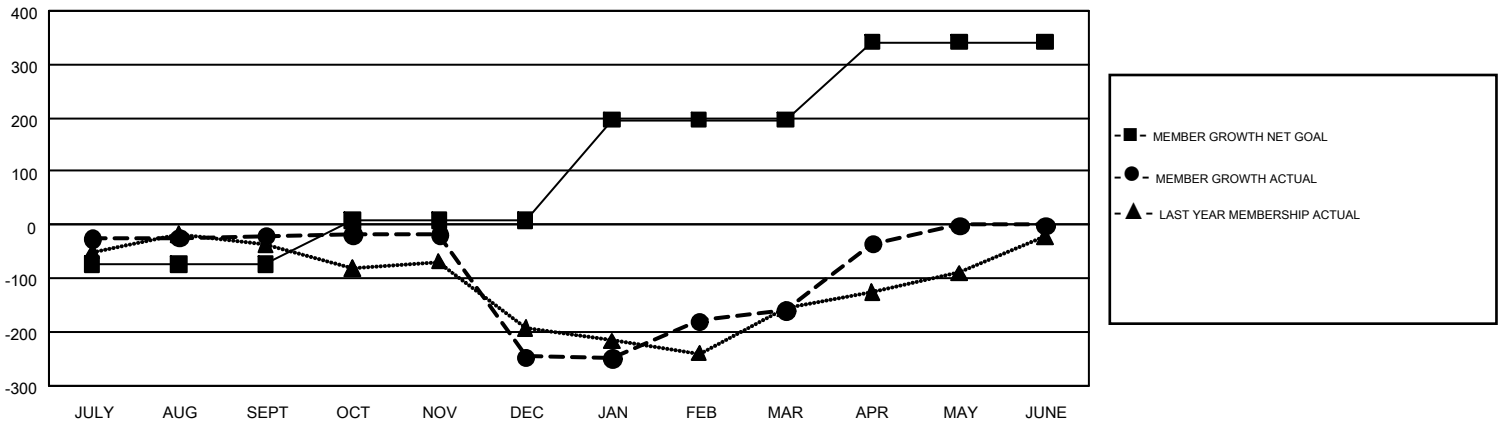
REPORT DOES NOT INCLUDE CLUBS IN UNDISTRICTED AREAS.

Clubs				Members			
RESULTS FOR 2018-2019				RESULTS FOR 2018-2019			
QUARTER	NEW CLUB GOAL	NEW CLUBS	DROPPED CLUBS	QUARTER	MEMBER GROWTH NET GOAL	MEMBER GROWTH ACTUAL	DROPPED MEMBERS ACTUAL (including transfers)
JULY/AUG/SEPT	0	2	3	JULY/AUG/SEPT	-74	117	111
OCT/NOV/DEC	3	1	7	OCT/NOV/DEC	82	134	358
JAN/FEB/MAR	5	0	1	JAN/FEB/MAR	188	246	144
APR/MAY/JUNE	5	4	0	APR/MAY/JUNE	146	198	74

GOALS AND ACTUAL NEW CLUBS CUMULATIVE



GOALS AND ACTUAL MEMBERS CUMULATIVE



DROPPED CLUBS: 10	176 CLUBS OF 427 ADDED 1 OR MORE NEW MEMBERS	<b>GENDER DISTRIBUTION</b> MALE 5,086 (58.70%) FEMALE 3,579 (41.30%)
<b>DROPPED MEMBERS</b> DECEASED 22 CLUB CANCELLED 134 OTHER 529 <b>TOTAL 685</b>	<a href="#">CLICK HERE FOR CUMULATIVE MEMBERSHIP DATA</a>	TOTAL FAMILY UNIT MEMBERS 714 FAMILY MEMBERS PAYING HALF DUES 368